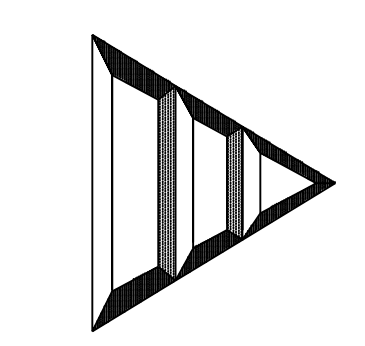




**JOHN OBERLIES CONSULTING ENGINEERS INC.**  
 MECHANICAL • ELECTRICAL • PLUMBING

Proposed Dialysis Clinic for:  
**NOBLESVILLE EXPANSION**  
 165 Sheridan Road  
 Noblesville, IN 46060



This is the place where a disclaimer statement can be placed.

Drafted By: GJR

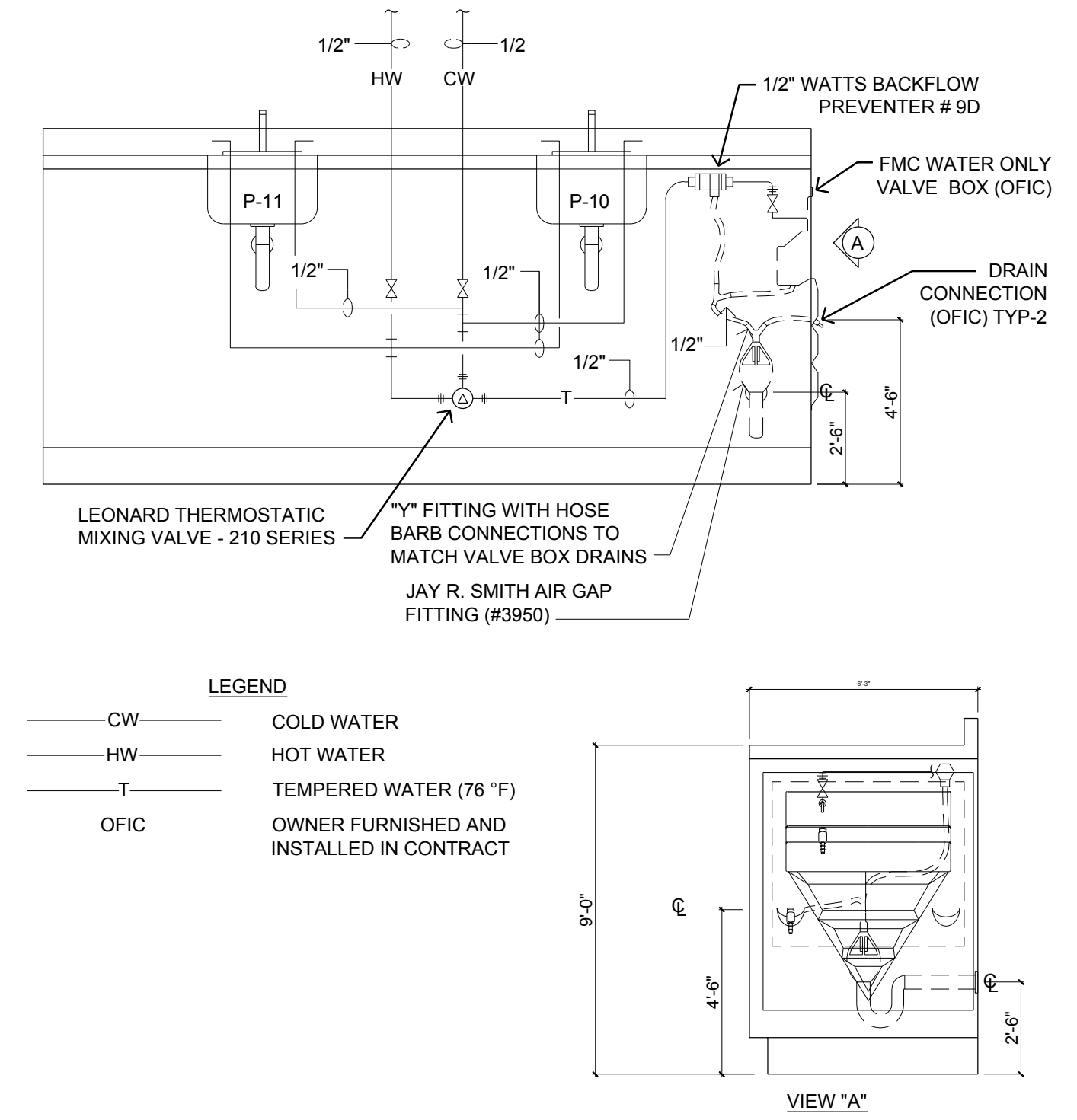
Checked By: JWO

Date Drawn: 07/20/10

Project #: 028012

REV #	DATE	REVISION DESCRIPTION
XXXXXX		
XXXXXX		
XXXXXX		
XXXXXX		
XXXXXX		
XXXXXX		
XXXXXX		
XXXXXX		
XXXXXX		

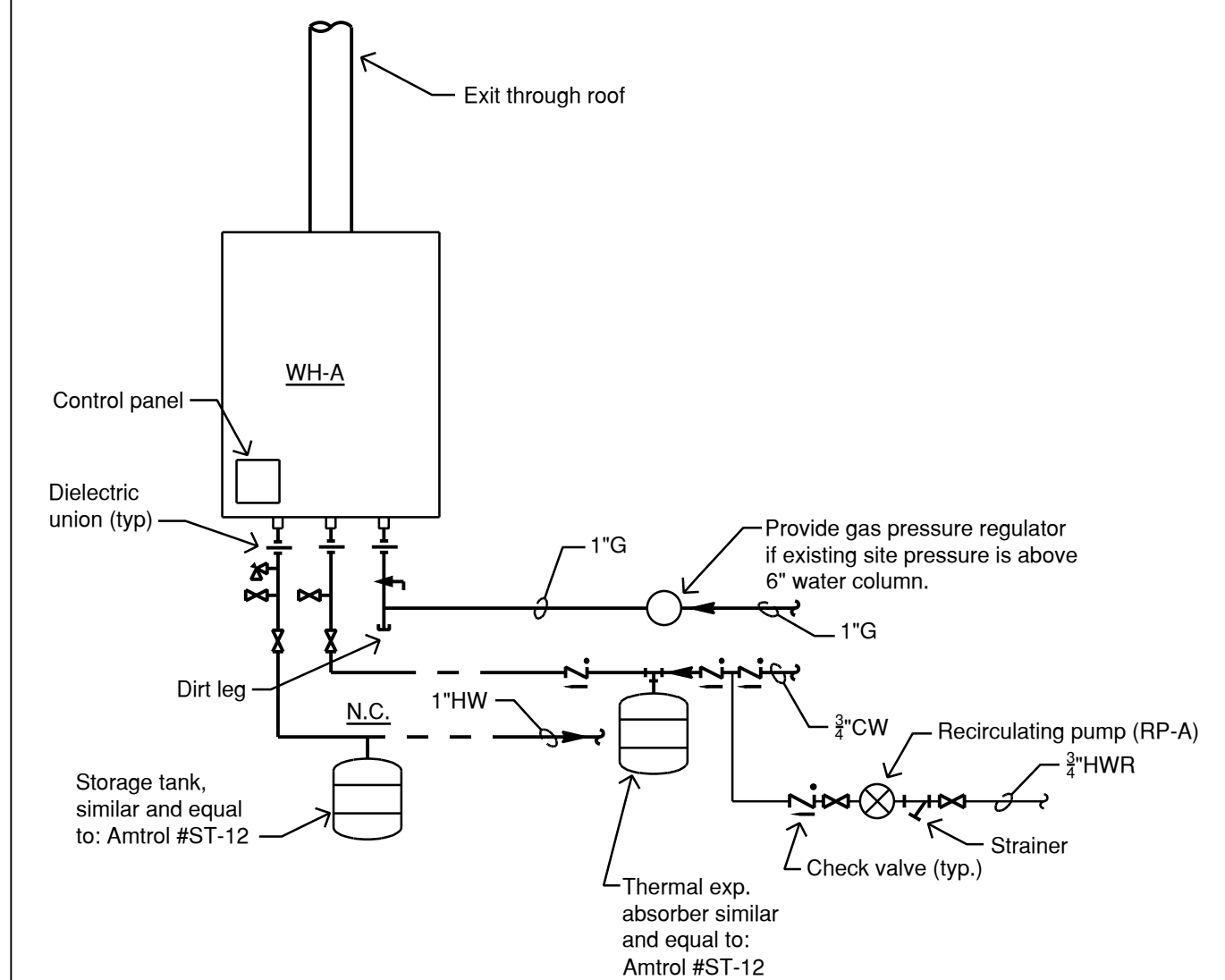
**P4.0**



### SINK BASIN PLUMBING DETAIL

NOT TO SCALE

Mark No.	Description	Pipe Connections (in)				Similar and Equal to
		HW	CW	W	V	
P-1	WATER CLOSET - Vitreous china, floor mtd., siphon jet, flush tank, elongated bowl, open front seat less cover, chrome plated brass supply and loose key stop, +18" A.F.F. to top of seat to suit ADA. Flush handle to be on wide side of stall.	-	1/2	4	2	AMERICAN STANDARD #2998.012 SEAT: CHURCH #9500C
P-2	LAVATORY - Vitreous china, wall hung, single lever faucet, flat plate strainer, cast brass trap with co., loose key stops, chrome plated supplies, concealed arm support, offset tailpiece. Protective shroud. Mount @34" to rim, to suit ADA.	1/2	1/2	1 1/2	1 1/2	AMERICAN STANDARD #0954.000 w/ #0059.020 FAUCET: AMERICAN STANDARD #2385.404
P-3	SINK - Cabinet mounted, undermount, 18GA. stainless steel, 1 bowl, bucket strainer. Cast brass p-trap w/co., loose key stops, and chrome plated supplies. Automatic faucet w/ plug-in transformer.	1/2	1/2	1 1/2	1 1/2	ELKAY #ELU1616 FAUCET: SLOAN #ETF-TT0-8-ADM w/ #ETF-233
P-4	SINK - Cabinet mounted, undermount, 18GA. stainless steel, 1 bowl, bucket strainer. Cast brass p-trap w/co., loose key stops, and chrome plated supplies. Gooseneck faucet.	-	1/2	1 1/2	1 1/2	ELKAY #ELU1616 FAUCET: CHICAGO #380-317CP
P-10	SINK - Cabinet mounted, undermount, 18GA. stainless steel, 1 bowl, bucket strainer. Cast brass p-trap w/co., loose key stops, and chrome plated supplies. Automatic faucet w/ plug-in transformer.	1/2	1/2	1 1/2	1 1/2	ELKAY #ELU1616 FAUCET: SLOAN #ETF-TT0-8-ADM w/ #ETF-233
P-13	LAVATORY - Vitreous china, wall hung, gooseneck faucet, flat plate strainer, cast brass trap with co., loose key stops, chrome plated supplies, concealed arm support, offset tailpiece. Protective shroud. Mount @34" to rim, to suit ADA.	1/2	1/2	1 1/2	1 1/2	AMERICAN STANDARD #0194.076 FAUCET: AMERICAN STANDARD #8832.000 w/ #372H
P-14	FLUSH HOPPER - Vitreous china, wall hung, flush valve, flat plate strainer, cast brass trap with co., loose key stops, chrome plated supplies, wall hanger. Beepan washer. Mount @-28" A.F.F. to rim.	1/2	1/2	4	2	AMERICAN STANDARD #0512.013 w/ #7582.067 FAUCET: SLOAN #117H
P-15	SINK - Cabinet mounted, self-rimming, cast iron, white enamel finish, 1 bowl, bucket strainer. Cast brass p-trap w/co., loose key stops, and chrome plated supplies. Gooseneck faucet on 8" centers, wrist blade handles.	1/2	1/2	1 1/2	1 1/2	KOHLER #K-5964-3 FAUCET: AMERICAN STANDARD #6532.170
VB-A	VALVE BOX - Water and Waste boxes by owner, installed by P.C. Mixing valve, backflow preventer and air gap fitting by P.C., installed by P.C. See "Sink Basin Plumbing Detail" sheet P601.	1/2	1/2	1 1/2	1 1/2	LEONARD #210 TA J.F. SMITH #3950 WATTS #9D
WH-A	WATER HEATER - Gas, modulating input, high efficiency, 6.5GPM @ 50°F rise, 36,000 - 199,000 BTUH. Provide control panel. Set outlet temperature to 110°F. Provide gas pressure regulator, suitable for site gas pressure, set to mfg's recommendations.	1/2	1/2	-	4	RINNAI #RC98HPH-NG & MC-01-S-W & RIK
RP-A	RECIRCULATING PUMP - 2GPM @ 5 foot of head, 10, 115V., 1/2 HP, 3250RPM. Shall operate 24 hours per day.	LINE SIZE	LINE SIZE	-	-	TACO #003



### WATER HEATER DETAIL

NOT TO SCALE