

NURSE CALL

NC Patient pull Station (Mtd at 48" A.F.F.) (Cornell series 4000 model #E-114-3 with nylon cord.)

NCL Domelight (Mtd at 91" A.F.F.) (Cornell series 4000 model #L-101 (white))

NCAP Nurse Call Annunciator Panel (Cornell #4000-6)

Note:
See Nurse Call Wiring Schematic on sheet E601

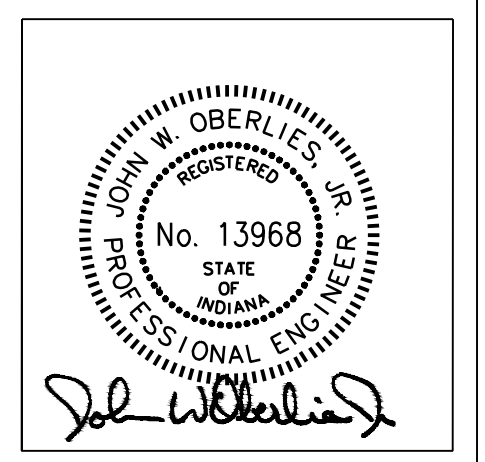
"NEC-2008, Article 517 compliant dual-grounding HFC-MCMP cable is required in all patient care areas."

J. Coax cable shall be West Penn #806 or Coleman #92045 Coax cable.

- Plan Notes:**
- 1 Pull station and dome lights are a part of the nurse call system.
 - 2 Leave a 5'-0" coil of coax cable at TV Board. (max distance of cable shall not exceed 175'-0")
 - 3 Leave a 2'-0" coil of coax at the TV box.
 - 4 Provide smoke detectors for fire shutter. Refer to Power Plan E2.0 for power supply.

- General Notes:**
- All 120V, 20 Amp circuits over 100' in length shall be #10 AWG.
 - Conduit system shall be EMT.
 - Contractor shall coordinate with all other trades to avoid conflicts of space.
 - Contractor shall coordinate the exact location of all devices with all other trades prior to rough-in. Exact location to be determined in the field.
 - Contractor shall coordinate with the mechanical and plumbing contractors for exact locations of equipment prior to rough-in.
 - Refer to sheet E4.0 for symbols.
 - Refer to sheet E1.0 for Electrical panelboard schedule.
 - Fire alarm devices shall match the existing system. Connect to the existing fire alarm system or coordinate with owner's alarm rep. prior to installation.
 - Coax cable shall be West Penn #806 or Coleman #92045 Coax cable.

COMMUNICATIONS PLAN
SCALE: 1/4" = 1'-0"



JOHN OBERLIES CONSULTING ENGINEERS INC.
MECHANICAL • ELECTRICAL • PLUMBING

Proposed Dialysis Clinic for:
NOBLESVILLE EXPANSION
165 Sheridan Road
Noblesville, IN 46060

This is the place where a disclaimer statement can be placed.

Drafted By: DRM
Checked By: SLH
Date Drawn: 07/20/10

REV #	DATE	REVISION DESCRIPTION
X/XX/XX	XXXXXXXXXXXXXX	

E2.2