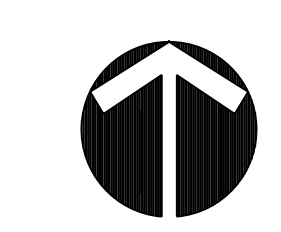


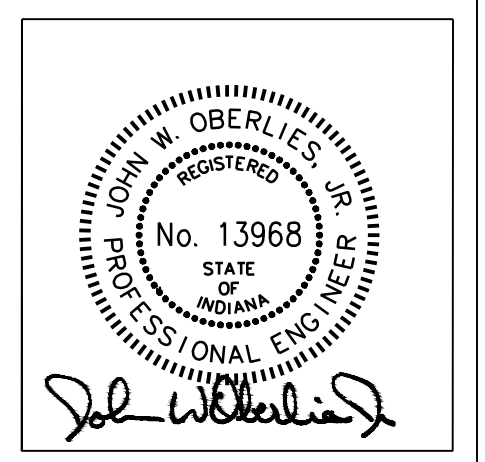
"NEC-2008, Article 517 compliant dual-grounding HFC-MCMP cable is required in all patient care areas."

**General Notes:**

- A. All 120V, 20 Amp circuits over 100' in length shall be #10 AWG.
- B. Conduit system shall be EMT.
- C. Contractor shall coordinate with all other trades to avoid conflicts of space.
- D. Contractor shall coordinate the exact location of all devices with all other trades prior to rough-in. Exact location to be determined in the field.
- E. Contractor shall coordinate with the mechanical and plumbing contractors for exact locations of equipment prior to rough-in.
- F. Refer to sheet E1.0 for Electrical panelboard schedule.
- G. Refer to sheet E4.0 for Symbols.
- H. Refer to sheet E2.0 for Light Fixture Schedule.



**LIGHTING PLAN**  
SCALE: 1/4" = 1'-0"



**JOHN OBERLIES CONSULTING ENGINEERS INC.**  
MECHANICAL • ELECTRICAL • PLUMBING

Proposed Dialysis Clinic for:  
**NOBLESVILLE EXPANSION**  
165 Sheridan Road  
Noblesville, IN 46060

This is the place where a disclaimer statement can be placed.

Drafted By: DRM  
Checked By: SLH  
Date Drawn: 07/20/10  
Project #: 028012

| REV #   | DATE           | REVISION DESCRIPTION |
|---------|----------------|----------------------|
| X/XX/XX | XXXXXXXXXXXXXX |                      |
| A       |                |                      |

**E2.1**