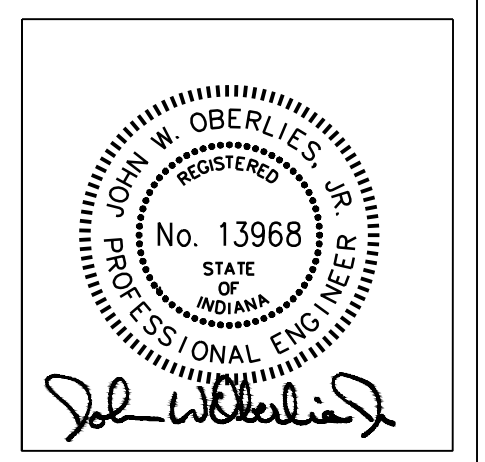


- Plan Notes:**
- Surface mount GFI behind removable panel for emergency eye faucet.
 - From the scale readout, install 1" flex conduit down to scale in floor. Coordinate with the scale supplier for location prior to rough-in.
 - Provide duplex receptacle for faucet control.
 - Provide power for fire shutter. Connect to panel 4810221, circuit #12. (Refer to Communications Plan, sheet E2.2 for location of smoke detectors associated with the shutter.

"NEC-2008, Article 517 compliant dual-grounding HFC-MCMP cable is required in all patient care areas."

- General Notes:**
- All 120V, 20 Amp circuits over 100' in length shall be #10 AWG.
 - Conduit system shall be EMT.
 - Contractor shall coordinate with all other trades to avoid conflicts of space.
 - Contractor shall coordinate the exact location of all devices with all other trades prior to rough-in. Exact location to be determined in the field.
 - Contractor shall coordinate with the mechanical and plumbing contractors for exact locations of equipment prior to rough-in.
 - Refer to sheet E1.0 for Electrical panel schedule.
 - Refer to sheet E4.0 for Symbols.
 - All circuiting is from panel 4810221, circuits as indicated on the drawings.



JOHN OBERLIES CONSULTING ENGINEERS INC.
MECHANICAL • ELECTRICAL • PLUMBING

Proposed Dialysis Clinic for:
NOBLESVILLE EXPANSION
165 Sheridan Road
Noblesville, IN 46060

This is the place where a disclaimer statement can be placed.

Drafted By: DRM
Checked By: SLH
Date Drawn: 07/20/10

REV #	DATE	REVISION DESCRIPTION
X/XX/XX	XXXXXXXXXXXXXXXXXX	
1		